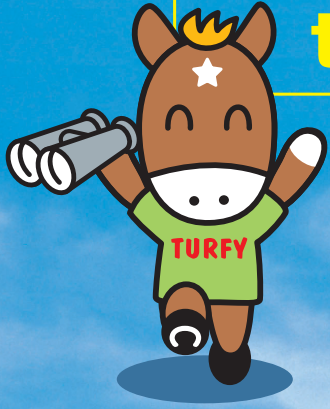


Welcome to the Racecourse!

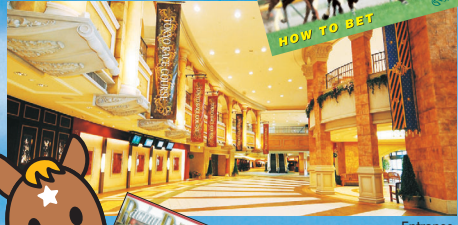


Buy your ticket, and in you go. Tickets cost ¥200, or ¥100 at some courses.



Staff at the Information Desk will tell you all you need to know.

Please see "How to Bet" for information on different types of bet and instructions on using betting slips.

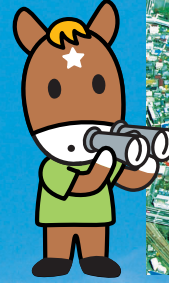


Entrance



First, pick up a Racing Program (free!)

When you go to a JRA racecourse, first head straight for the stand. You'll be overwhelmed by the sheer size of the place. Feel refreshed by the brilliant green of the turf and the pleasant breeze. The stand also gives a great view of the races. Some of the seats are unreserved and cost nothing, others can be reserved for a fee. If you're hungry, there's a selection of places serving delicious food, including fast food, cafés and restaurants. Play area and attractions are available for family with children. Of course, there are also kiosks for placing bets and plenty of shops selling souvenirs and merchandises. It's a place where you can stay all day and never get bored – welcome to the racecourse!



A Day at the Races

There are usually 12 races in a day.

- 9am — Gates open
- 10am — First race starts
- Midday — Lunch break
- 3.30pm — Main race time
- 4pm — Last race starts
- 5pm — Gates close

*All times are approximate!



There's even a convenience store

Flow of a race

- See the horses in the Parade Ring
- Get information from a racing newspaper
- Decide how you want to bet
- Check the odds
- Mark your betting slip
- Place your bet
- Watch the race!
- Official placings, payouts



Reserved seats – watch the races in comfort!



IT corner – "Horse Race i-Spot"

Plenty of souvenirs, including "Turfy" cuddly toy



Lots of eating options, from fast food to restaurants

